

AlunoTec®
Build Your Pergola

Heavy-duty Waterproof Motorized Pergola

BIOCLIMATIC
PERGOLA

PERGO-T600





Build Your Pergola

CONTENT

01. Why Choose AlunoTec

06. Color Options

02. Key Advantages

07. Drainage System

03-04. Main Profiles

08. Optional Items

05. Design Options

09-12. Project Showcases

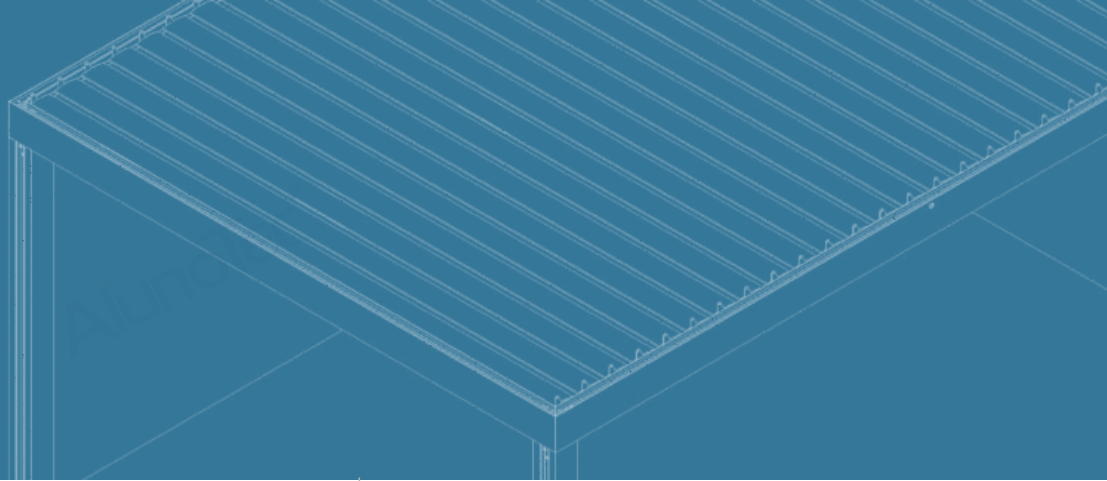


WHY CHOOSE ALUNOTEC?

- We focus on the outdoor landscape products for **10 years**, and keep growing with modesty and enterprising.
- With the effort of our design team, 3D effects can be provided for our clients' reference.
- We are a superior company verified by Alibaba, Made in China and SGS.
- We have successfully made more than ten thousands of transactions with **150+ countries** over the world.
- We have rich experience to service customers with **fashionable designs, reliable quality product, professional shipping solution, and workable cooperative development.**
- We have good reputation from our clients on the markets.
- We cherish customers' trust, have **win-win strategy** of opening up, and appreciate any inquiry from you.

KEY

Advantages



Each pergola comes with **built-in rubber seals inside the louver blades** that shield against rain water and eliminate any chatter from wind.



Once the **smart Tuya all-in-one app** is downloaded, you can adjust the louvers to create the perfect amount of shade or weather protection by **iPhone or android device**.



Powder coated with **AkzoNobel Brand** allows our pergola to resist the harsh environments.



Electric motor with **IP67** is CE certified and is designed as hidden to achieve better looking.



Custom fit linear LED lighting snaps in the louver blade and can be dimmable; **RGB lights** can be controlled remotely and set to desired color.



Each Pergola is **quality tested and certified** before it leaves the factory.



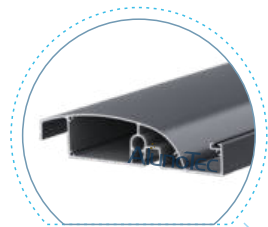
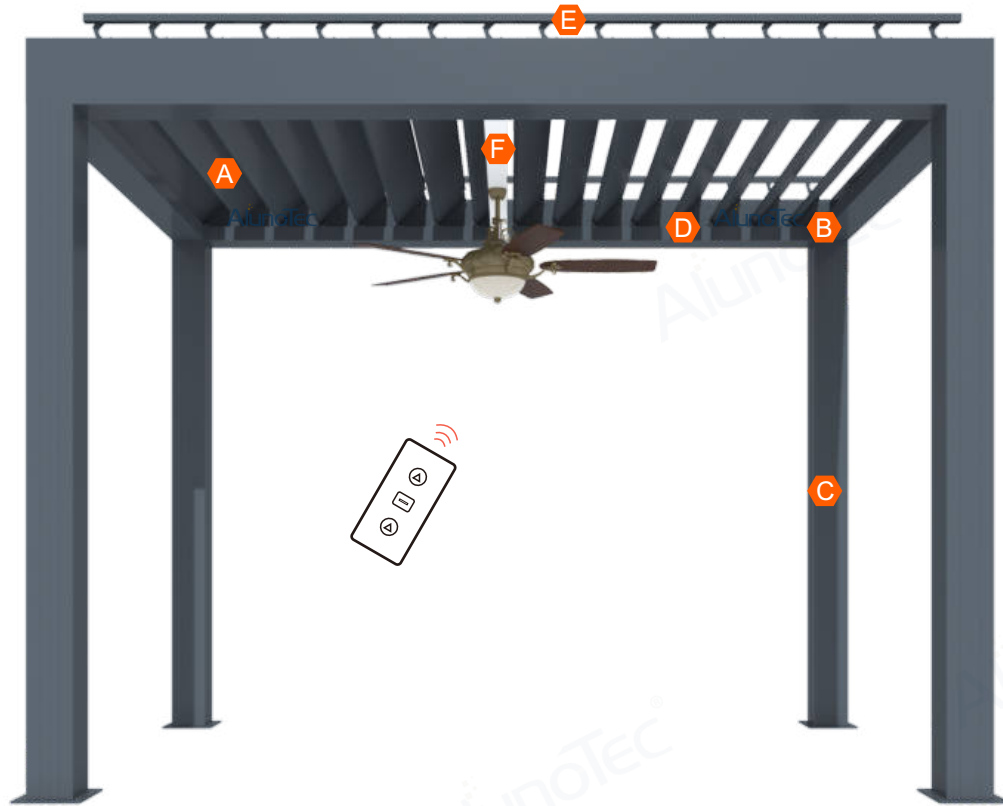
With **3mm thickness beam & post** and heavy duty connector system, T600 is enjoying **180-220KM/H wind resistant and 60-80cm snow loading**.



Product design is **easy to install** and the **professional installation instructions** will be offered accordingly.

Main PROFILES

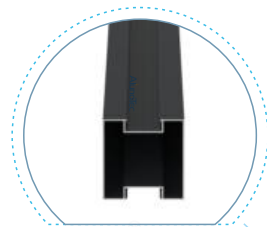
Pergo-T600 system has its unique advantages so to be the favorite on the markets. Particularly, as to combine unique hollow blades with architectural aesthetics to **completely block rain**, it can ensure perfect waterproof effect after all louvers are fully closed, while it can **withstand 180~220km/h winds**. This system is the third generation of outdoor sunshade louvers based on all-aluminum technology.



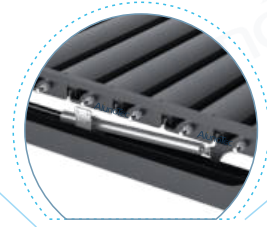
A Louver Blade



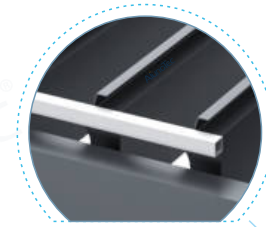
B Beam



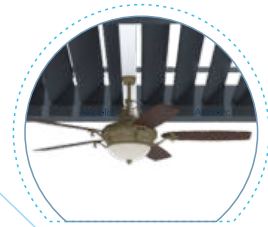
C Post/Column



D Motor



E Control Rod









F Fan Installed Tube



The specifications below is applicable to all design options.



Operation	Motorized with App
Powder Coated	7-10 Years' Guarantee AkzoNobel
Maximum Width (Single Bay)	4.5m
Maximum Projection (Single Bay)	6m
Motor Waterproof Rating	IP67
Wind Resistant	180-220 KM/H
Snow Loading	60-100CM
Optional Items	 Sliding Glass Doors  Zip Screen  Privacy Slat Wall  Lighting  Outdoor Furnitures  WPC Decking

DESIGN

Options

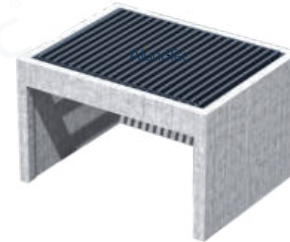
The AlunoTec Outdoor Living Pergola are perfect to match every installation. The applications depend on the space and use. The aluminum pergola systems can be used as free standing with 4 posts, wall mounted with 2 posts or version with extension. Larger roof constructions have 2 roof elements. These can be operated together or separately. Bigger areas can be covered by coupling the necessary elements, along the length or width.



Free standing



Free standing
& Wall mounted



Fit into existing
structure



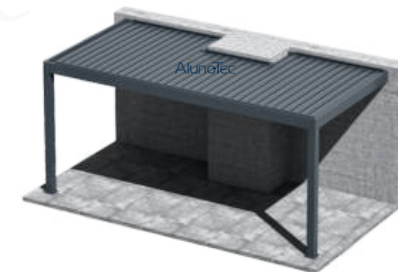
Version with extension



Extra post version



Wall-mounted blades
perpendicular to wall



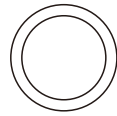
Wall-mounted blades
perpendicular to wall

COLOR

Options

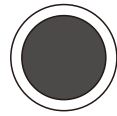
Colours

Finish



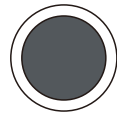
RAL 9016
Traffic White

Matt



RAL 9005
Jet Black

Matt



RAL 7016
Anthracite Grey

Matt



RAL 9016 Traffic White
+ RAL 7016 Anthracite Grey

Matt



RAL8040
Black Brown

Matt



More than 200 other RAL colours are available as a option.

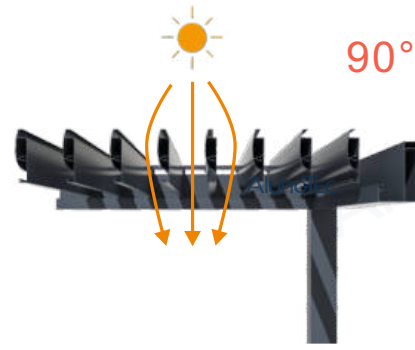




Louvers are designed such that they will interlock to keep out the water, hot sun and snow. Deep channels in each louver carry water away to the in-built surrounding gutter.

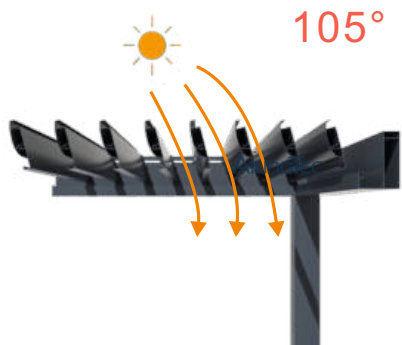


Tilt the louvers like that, the sun is blocked and the fresh air can flush through the opening gaps.



In winter or cooler weather enjoy the natural warmth of sunlight by tilting the louvers to the desired angle with the fingertip touch of your remote control.

DRAINAGE System



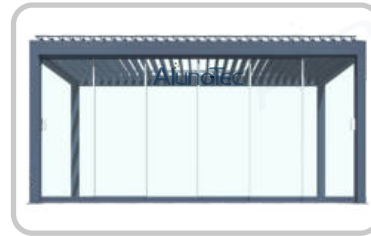
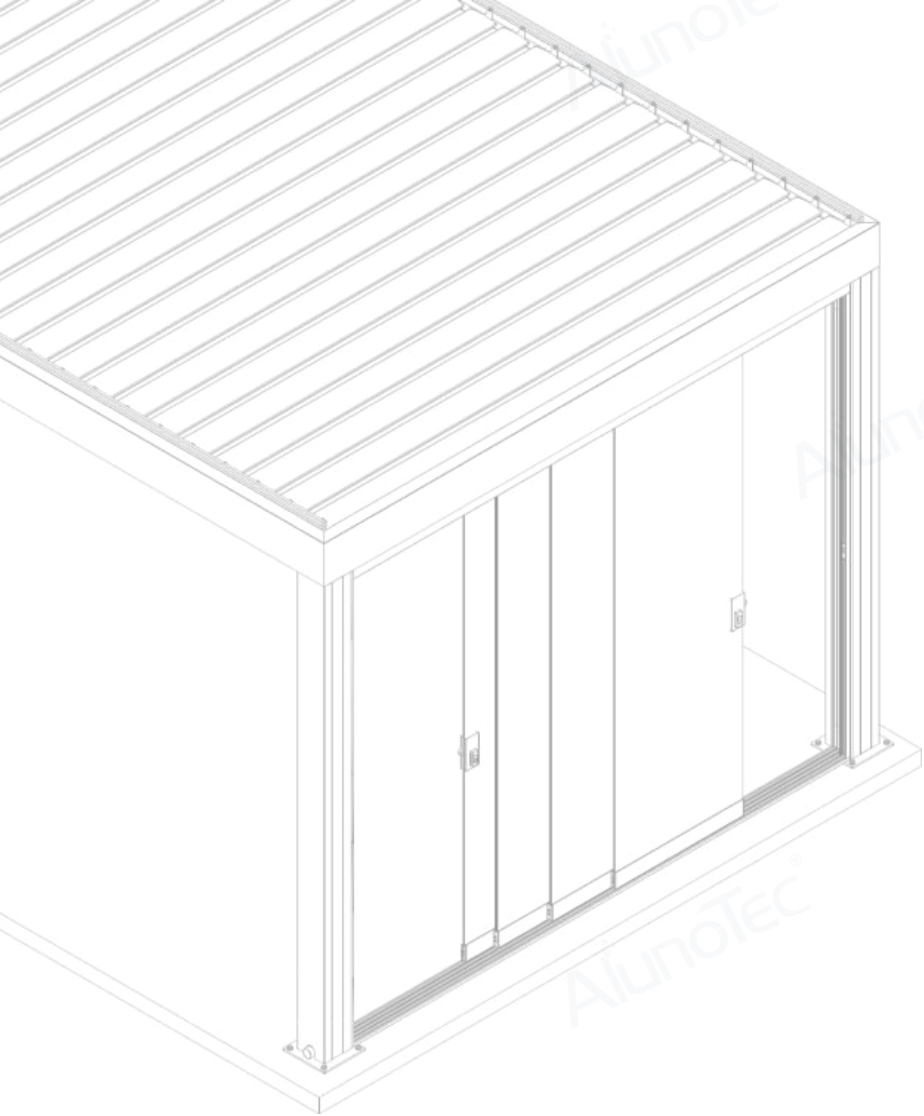
With 105° opening angle, you can still enjoy the sunshine when sunset.


Protection from Rain

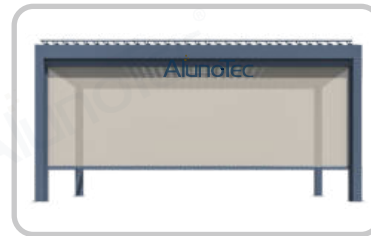



In the event of rain, our pergola is closed to provide complete protection. Water is channeled away discreetly through the internal drain hidden inside the post.

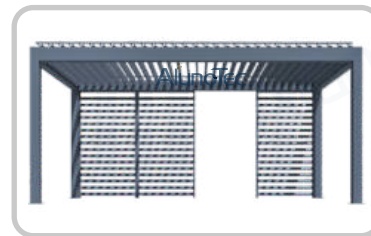




 Sliding Glass Doors




 Motorized Side Screen



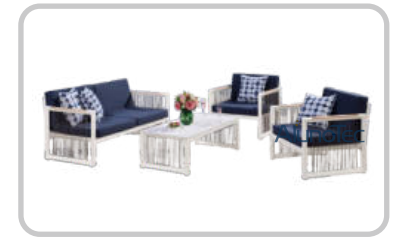
 Privacy Slat Wall



 Lighting Options



 Accessory Fan Beam



 Outdoor Furnitures



 WPC Decking

OPTIONAL

Items

Made to fit your lifestyle.
Enjoy outdoor living all year round!



PROJECT

Showcases





Find the ideal outdoor pergola to make the most of your backyard.

AlunoTec pergola solve all your outdoor living challenges for the perfect backyard oasis.



BUILD YOUR PERGOLA



PERGOLA

Let us bring your living space outside!



CONTACT US

✉ info@alunotec.com

☎ +86-769-88776226

🌐 www.alunotec.com

📍 Building D, Peace Square, Nancheng District,
Dongguan, Guangdong, PRC.

Please scan the QR code below if you want to know more



Website



Facebook



YouTube



TikTok



LinkedIn



3 years
warranty on
electronic
equipment



10 years
warranty on
the powder
coating

Pergo-T600

SPECIFICATION

Blade
(Flat Blade)



202 X 45 X 1.8mm

Post



150 X 150 X 2.8mm

Beam & Gutter



210 x 150 X 2.8mm

Control Rod



25X25x2.0mm

Motor	Brand	A-OK
	Voltage	110V or 220V
	Waterproof Level	Ip67
LED Strip Light	Color	White and Yellow
	Position	Blade
RGB Light Strip or Blue Light Strip or Single Warm White light Strip	Adds-on	RGB
	Position	Inner Gutter Perimeter
Wind Resistant (Estimated)		180-220km/h
Snow Loading (Estimated)		60-100cm
Warranty (Structure)		15 years
Warranty (Motorized System)		3 years
Warranty (Surface Treatment)		10 years

Operation

Motorized with App

Surface Treatment

AkzoNobel Brand

Color Options



RAL9016 White



RAL7016 Grey



RAL9005 Jet Black



RAL8040 Black Brown